

AUSTRALIAN NATIONAL
MARITIME MUSEUM

MU SEA UM

—
Venues



MUSEUM

On your big day, we know you want to celebrate in style.

Our range of unique venues make it easy to impress, with a stunning harbourside location in one of the world's most beautiful cities. With options including the deck of an ex-Naval Destroyer or tall ship, our event spaces are truly spectacular and surprising.

It's easy to get started. Choose a space and package to suit your party size and style, whether you're after an intimate celebration or planning a large and lavish wedding. Our full-service event options help you take care of every detail just the way you want, from food and beverage to audio-visual, decorating and more.

Check out our range of stylish spaces and let's chat about creating your special day.

VENUES

Ceremony

WATERFRONT BOARDWALK

A unique wedding ceremony with a stunning city skyline backdrop. Say 'I do' in front of your family and friends as the sun sets over our fleet of beautifully restored historic vessels.

THE TERRACE ROOM

This spacious and bright room allows for an indoor wedding ceremony with an outdoor feel. Floor-to-ceiling windows reveal sweeping views of Darling Harbour and Sydney's spectacular city skyline.

BEN LEXCEN TERRACE

Our star attraction, this spacious roof top terrace offers spectacular city skyline views. Perched above our fleet of beautifully restored historic vessels, a wedding ceremony in this unique space is simply unforgettable.

HMAS VAMPIRE

A wedding ceremony or pre-reception drinks on board ex-Naval Destroyer, HMAS *Vampire* is a truly unique experience. The open-air helipad area at the stern of the vessel sits in the middle of beautiful Darling Harbour and guarantees a wedding with a difference.

Reception

YOTS WATERSIDE

Enjoy an unforgettable reception with the lights of the city in the background at Yots Waterside, our premier indoor/outdoor venue. On a boardwalk beside the harbour, it's perfectly poised for stylish receptions, dancing and curated catering.

THE TERRACE ROOM

After dark, kick up your heels and party. Floor-to-ceiling windows reveal sweeping views of the harbour and city skyline. With a dance floor and spacious balcony, it's the ultimate way to celebrate with special guests.

BEN LEXCEN TERRACE

In the heart of our precinct, this spacious rooftop terrace offers spectacular city skyline views. Perched above the Darling Harbour precinct, a wedding ceremony held here is a truly one-of-a-kind occasion.

LIGHTHOUSE GALLERY

Our largest indoor space, with 13m high ceilings and an in-house truss for hanging decorations. Create a wow-factor event for your guests.

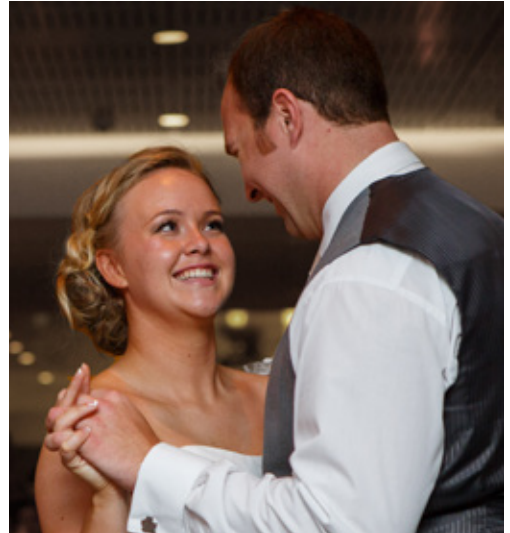
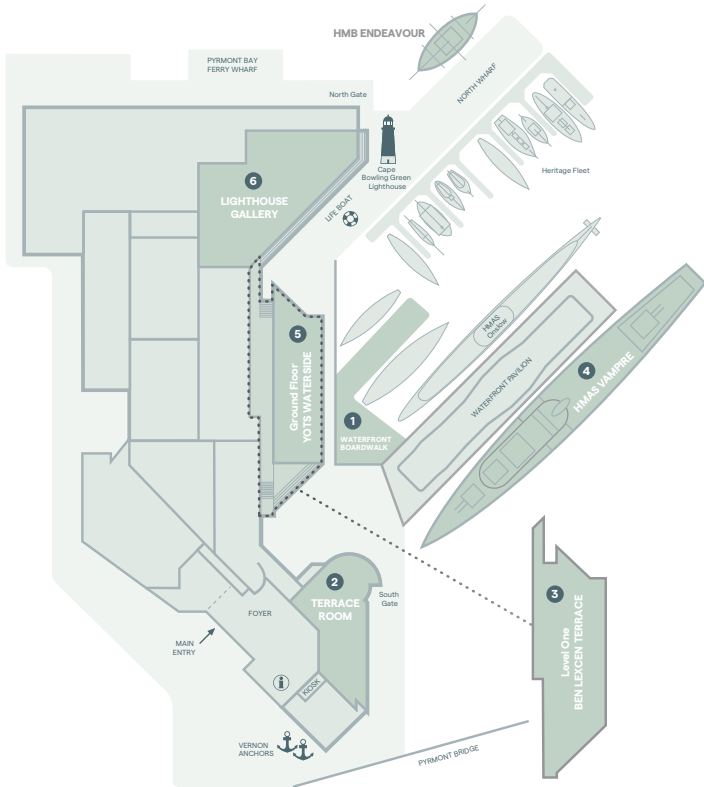


Image courtesy Anna Wang



WINNER

Restaurant & Catering Australia
Award for Excellence (2017)



The museum sources fresh, local and seasonal produce through our Gold license caterer Laissez-faire.

Laissez-faire works with premium local seafood and beef suppliers, artisan cheese producers and quality local fruit and vegetable growers to develop seasonally-driven, inspiring menus that bring the best to your event.

Reducing our environmental footprint by innovating with sustainable waste management policies, we work closely with our catering partner to provide the highest standards in quality assurance at every level.

1 Waterfront Boardwalk

Capacity

Ceremony	100
----------	-----

Features

- Absolute waterfront
- Views of the city skyline and heritage vessels
- Spacious amphitheatre set-up
- Unique outdoor setting

2 Terrace Room

Capacity

Ceremony	80
Reception with dance floor	140

Features

- Floor-to-ceiling windows
- Spacious balcony
- Dance floor
- In-house audio system
- Lectern and microphone

3 Ben Lexcen Terrace

Capacity

Ceremony	100
----------	-----

Features

- Elevated aspect
- Spectacular city skyline and harbour views
- Frameless glass balustrade
- Open-air covered venue

4 HMAS Vampire

Capacity

Ceremony	50
Cocktails	200

Features

- Uninterrupted city skyline views
- Alfresco setting

5 Yots Waterside

Capacity

Reception with dance floor	140
----------------------------	-----

Features

- Outdoor boardwalk area
- Dual room configuration

6 Lighthouse Gallery

Capacity

Reception with dance floor	220
----------------------------	-----

Features

- 13m high ceilings
- In-house truss
- Waterfront
- Pillar-free
- Darling Harbour fireworks

Located only a minutes from the CBD, and the International Convention Centre in Darling Harbour the museum can be accessed by boat, water taxi, ferry, light rail, bus or private transport.

You'll find us right on the harbour's edge at 2 Murray Street, Sydney.

Park all day for only \$15 at Harbourside Secure Parking or The Star. Ask your event supervisor to validate your ticket at the museum reception desk.

AUSTRALIAN NATIONAL MARITIME MUSEUM

2 Murray Street, Sydney | 02 9298 3649 | venues@sea.museum | sea.museum/venues