

An aerial night view of the Melbourne skyline, featuring numerous illuminated skyscrapers and city buildings. The image is split into two main sections by a dark red horizontal band. The top section shows a dense cluster of high-rise buildings, while the bottom section shows a wider view of the city, including the Yarra River, bridges, and historic architecture like the Flinders Street Clock Tower.

RYDGES

MELBOURNE

# CONFERENCE & EVENTS

REFRESHINGLY LOCAL

[RYDGES.COM](http://RYDGES.COM)



# A NEW RYDGES MELBOURNE

## More Events On Every Level.

Immersed in the heart of Melbourne CBD, the newly reopened Rydges Melbourne is the perfect destination for business or pleasure. Venues at Rydges Melbourne are not just a space, but the ultimate event experience.

Rydges Melbourne is home to eleven versatile conference and event venues, including the brand-new state-of-the-art Centre Stage function room, perfect for elegant weddings or memorable galas, and an expansive Rooftop Terrace overlooking Her Majesty's Theatre and Chinatown.

Spanning 1500sqm across two levels, every element of the event spaces have been transformed, with the inclusion of the best-in-market sound, lighting and music systems with endless production possibilities.

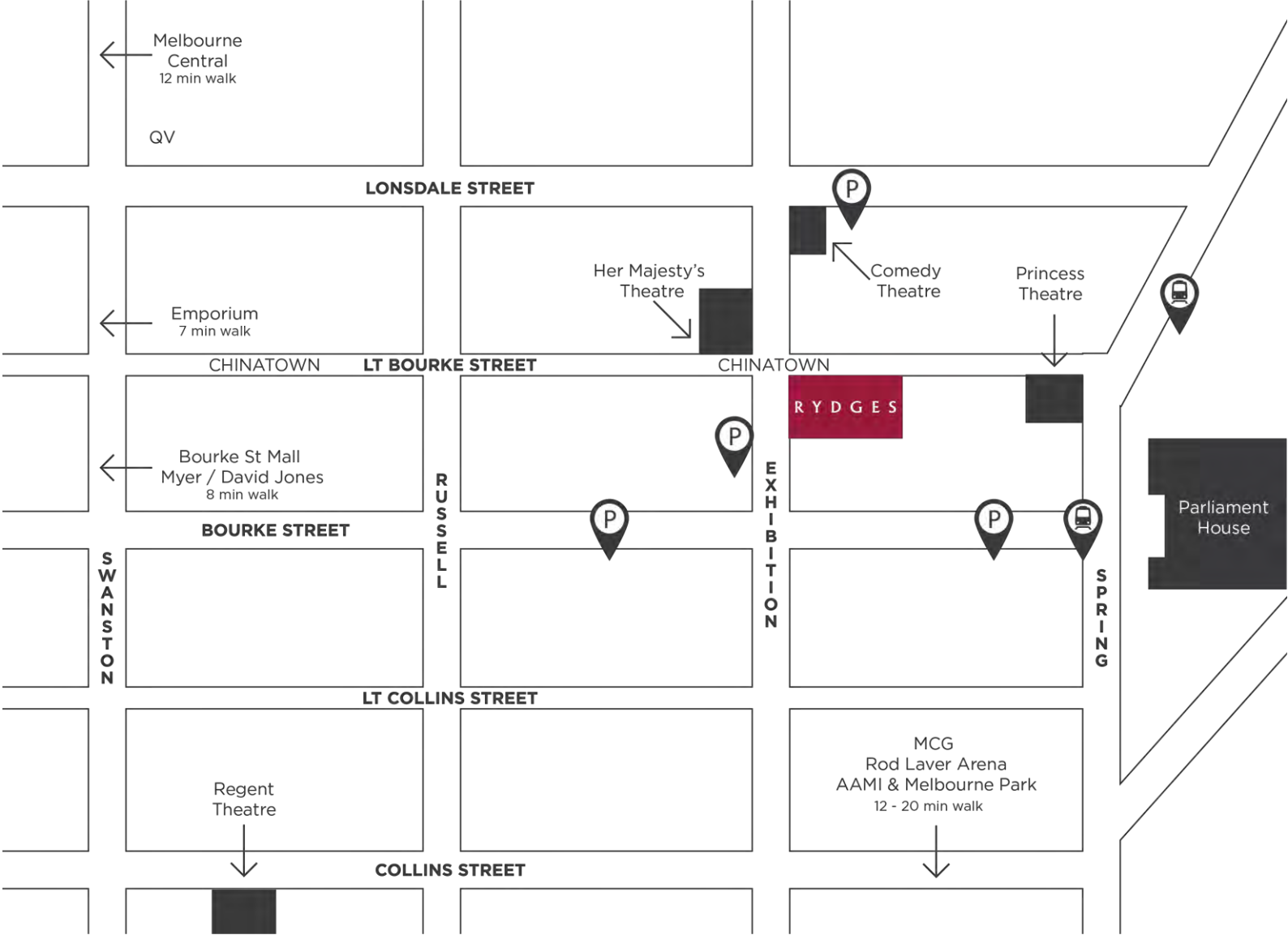
Events are elevated with refreshingly local menus to enhance all occasions. Indulge in healthy day delegate packages or feast on elegant banquets featuring local produce, paired with an Australian led beverage list.

Offering 370 rooms that are inspired by the Australian landscape. Enjoy a streamlined check-in, in-room connectivity, an interactive fitness studio, outdoor heated rooftop pool, and Bossley Bar & Restaurant at the new Rydges Melbourne.

Chat to our team of event experts to start planning your next event.



# LOCATION

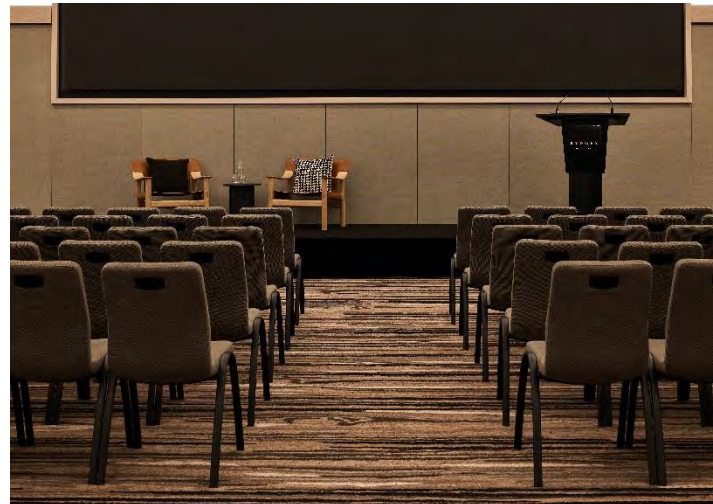


# CENTRE STAGE

Whether you're planning a gala dinner, launch, conference, or your wedding – our largest event space is perfect for when you want to take Centre Stage. Start your momentous occasion in glamorous Bobby's pre-function bar, with views overlooking Exhibition Street and Melbourne's theatre district.

With soaring vaulted ceilings, Centre Stage can fit up to 340 guests seated or 500 cocktail and theatre, or it can be divided into two separate areas to suit your event needs.

- 495sqm pillar-less function room
- Private pre-function bar
- 7m x 4m built-in HD LED screen
- 2 x 200 inch retractable HD projector screens
- Built-in surround sound
- Divider wall to create two separate spaces
- Complimentary high-speed Wi-Fi
- Tailored menus using seasonal and local produce





# MEETING PLACE

With an abundance of natural light, and overlooking Her Majesty's Theatre, the Meeting Place can host up to 300 guests cocktail or theatre and 240 seated. Meeting Place is fitted with divider walls with the ability to create four private function rooms for any configuration of your choice.

Whether you're hosting a dinner, cocktail party, exhibition or delivering a presentation — the picturesque windows allow abundant natural light and offer a view of Melbourne's theatre precinct and the gateway to Chinatown, the quintessential Melbourne setting.

- 5 x 160 inch retractable built-in HD LED projector screen
- Built-in surround sound
- Complimentary tea and coffee, sparkling and still water and juice in the pre-function foyer
- Divider walls to create four separate venues and multiple configurations
- Complimentary Wi-Fi
- Tailored menus using seasonal and local produce





# TERRACE & ROOFTOP TERRACE

When you're looking for the ultimate Melbourne rooftop experience, look no further. Taking in views of Her Majesty's Theatre and the city skyline, this venue combines all Terrace Rooms and the adjoining Rooftop Terrace. The expansive indoor-outdoor venue can host 200 guests for cocktail style events, with an awning and heating for those brisk Melbourne nights.

This level two rooftop space is the ideal venue to for a relaxed setting or to celebrate any special occasion. There's no occasion that wouldn't be elevated by this space. With lounge furniture throughout, all surrounded by lush greenery, stunning by day and breathtaking by night — just wait and see.

- Private rooftop with Melbourne skyline views
- Terrace Rooms fitted with divider walls with the ability to create up to three separate function rooms for more intimate gatherings and fitted with 3 x 75-inch LCD screens
- Rooftop Terrace features a luxurious outdoor bar and mobile bar cart, lounge furniture, umbrellas, lush planter boxes, lighting, outdoor heating and awning.





# BOSSLEY PRIVATE DINING

Whether it's for wining or dining, business dinners or big birthdays, working lunches or intimate weddings, anything goes at Bossley. No matter what, you'll feel right at home – and so will your guests.

With two private dining rooms that can be used separately or combined for when bigger is better, Bossley Private Dining offers:

- Start at Lt Bossley's dedicated entrance, where you can usher your guests to a communal table for 14 guests
- Private entrance and bar
- Larger Private Dining Room surrounded by floor-to-ceiling wine cellars for 44 guests
- Presentation-ready TV
- For larger celebrations, Bossley Bar & Restaurant is available for exclusive hire. Chat to our team for more information





# ROOFTOP POOL

A playful and glamorous celebration of our proud 1970's heritage, come up to Level 23 and get poolside. This rooftop pool can be transformed into your own private event space, with sweeping Melbourne city views.

With a luxe cocktail bar fully-equipped for your next celebration, and a delectable grazing station, invite up to 60 guests for a memorable event — it's sure to make a splash.

- Sweeping views of Melbourne city skyline
- Exclusive hire of rooftop heated pool
- Luxurious private bar
- Lounge furniture and umbrellas
- Bluetooth built-in sound system

The Rooftop Pool is an outdoor venue exposed to Melbourne weather. Should the weather not be in favour, we will look to accommodate your group in an indoor venue or postpone to a mutually agreed upon date. Date changes are subject to availability.





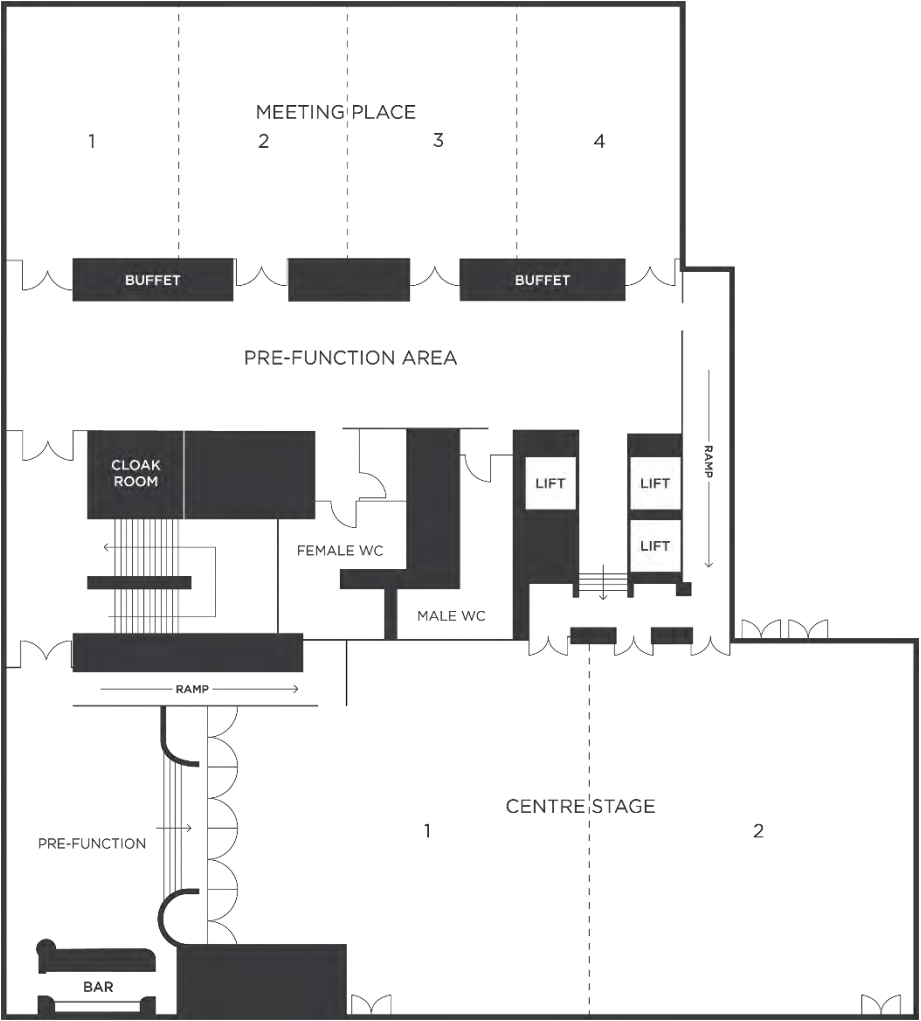
# CAPACITIES

| Centre Stage          |              |                |                | Meeting Place |                 |                 |                 |                 |                  |                   | Terrace Room            |               |                |                |                |                         |              |              |
|-----------------------|--------------|----------------|----------------|---------------|-----------------|-----------------|-----------------|-----------------|------------------|-------------------|-------------------------|---------------|----------------|----------------|----------------|-------------------------|--------------|--------------|
|                       | CENTRE STAGE | CENTRE STAGE 1 | CENTRE STAGE 2 | MEETING PLACE | MEETING PLACE 1 | MEETING PLACE 2 | MEETING PLACE 3 | MEETING PLACE 4 | MP 1&2, 2&3, 3&4 | MP 1,2&3 OR 2,3&4 | TERRACE ROOMS & ROOFTOP | TERRACE ROOMS | TERRACE ROOM 1 | TERRACE ROOM 2 | TERRACE ROOM 3 | TERRACE ROOM 1&2 or 2&3 | BOSSSLEY PDR | ROOFTOP POOL |
|                       | LEVEL 1      |                |                | LEVEL 1       |                 |                 |                 |                 |                  |                   | LEVEL 2                 |               |                |                |                |                         | GROUND       | LEVEL 23     |
| AREA M²               | 495          | -              | -              | 332           | 83              | 83              | 83              | 83              | 166              | 249               | 460                     | 143           | 57             | -              | -              | 100                     | -            | -            |
| THEATRE               | 500          | 176            | 220            | 300           | 75              | 80              | 80              | 75              | 168              | 225               | -                       | -             | 38             | 32             | 32             | -                       | 40           | -            |
| CLASSROOM             | 282          | 114            | 135            | 156           | 36              | 36              | 36              | 36              | 72               | 120               | -                       | -             | 18             | 12             | 12             | -                       | 20           | -            |
| U-SHAPE               | -            | -              | -              | -             | 30              | 30              | 30              | 30              | -                | -                 | -                       | -             | -              | -              | -              | -                       | 13           | -            |
| CABARET               | 280          | 120            | 128            | 200           | 48              | 48              | 48              | 48              | 96               | 144               | -                       | -             | -              | -              | -              | -                       | -            | -            |
| BOARDROOM             | -            | -              | -              | -             | -               | -               | -               | -               | -                | -                 | -                       | -             | 12             | 12             | 12             | -                       | 20           | -            |
| BANQUET               | 340          | 140            | 150            | 240           | 50              | 60              | 60              | 50              | 100              | 170               | -                       | 56            | 12             | 12             | 12             | 42                      | 40           | -            |
| BANQUET W/ DANCEFLOOR | 300          | 120            | 110            | 180           | -               | -               | -               | -               | 60               | 80                | -                       | -             | -              | -              | -              | -                       | -            | -            |
| COCKTAIL              | 500          | 250            | 250            | 300           | 80              | 80              | 80              | 80              | 140              | 200               | 200                     | 130           | -              | -              | -              | 60                      | 100          | 60           |
| EXHIBITION            | 22           | *              | *              | 15            | *               | *               | *               | *               | *                | *                 | -                       | -             | -              | -              | -              | -                       | -            | -            |

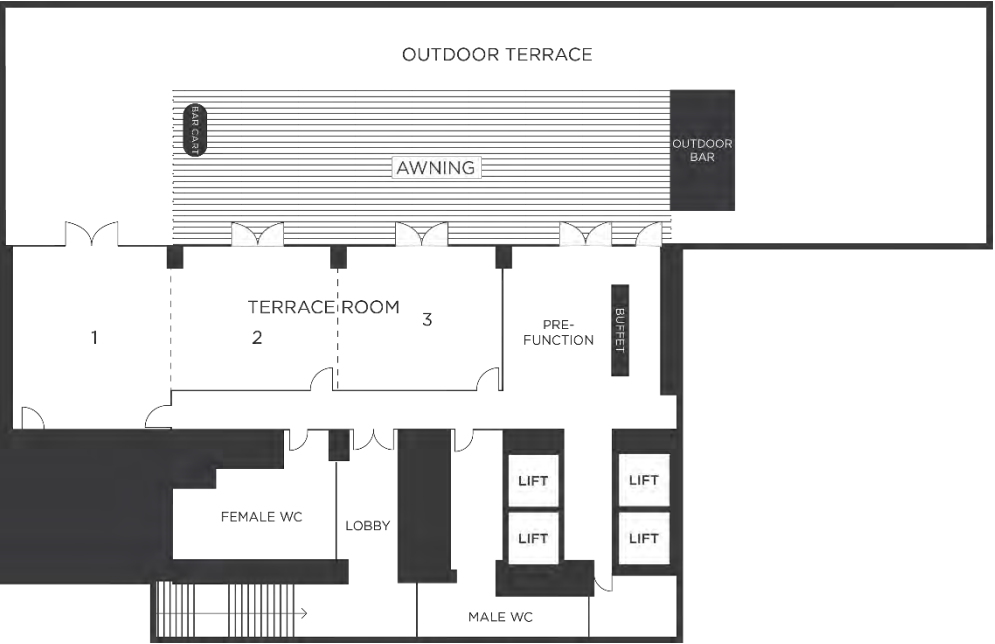
\* Discuss with our Sales Team for the best exhibition configuration

# FLOORPLAN

Level One



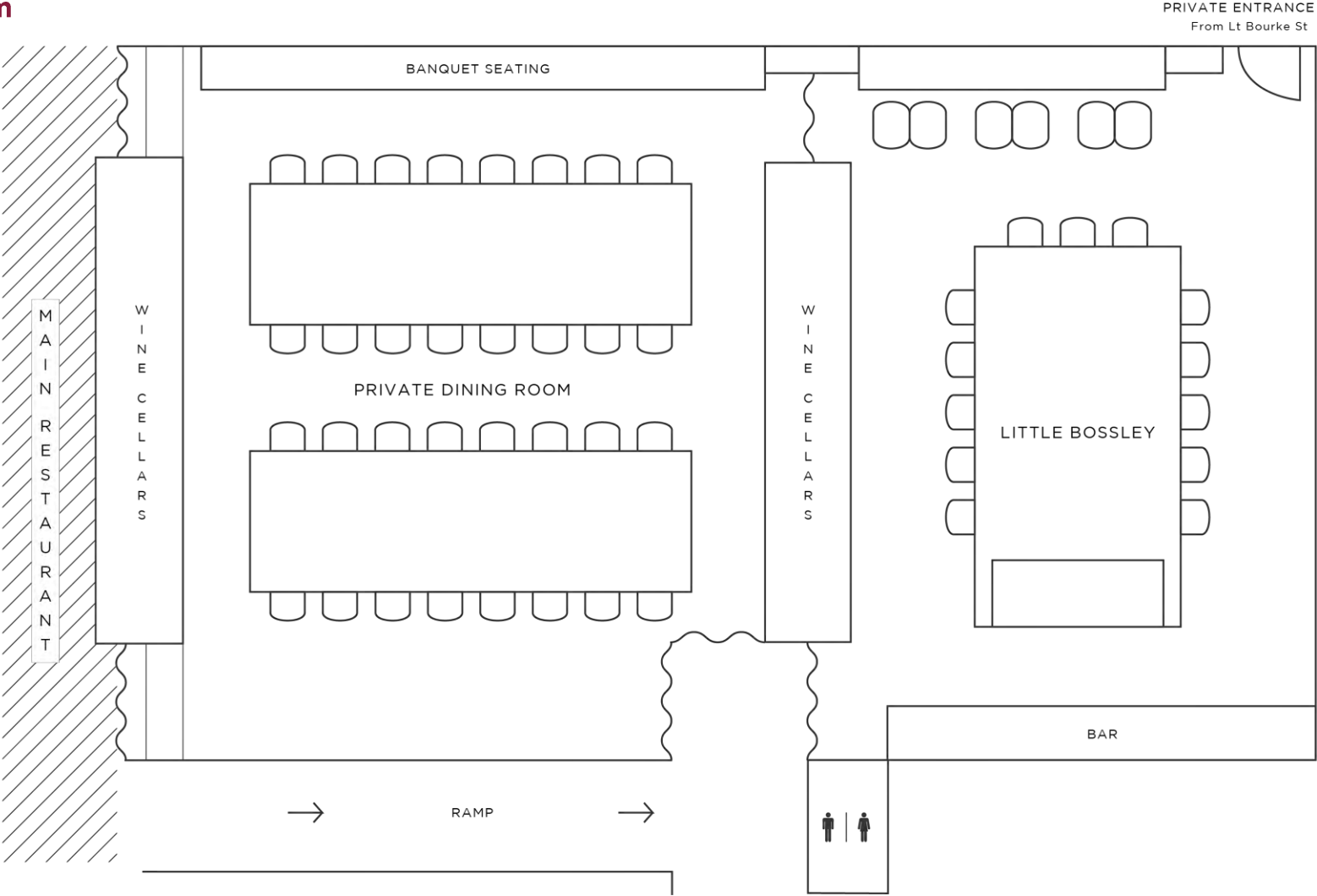
Level Two





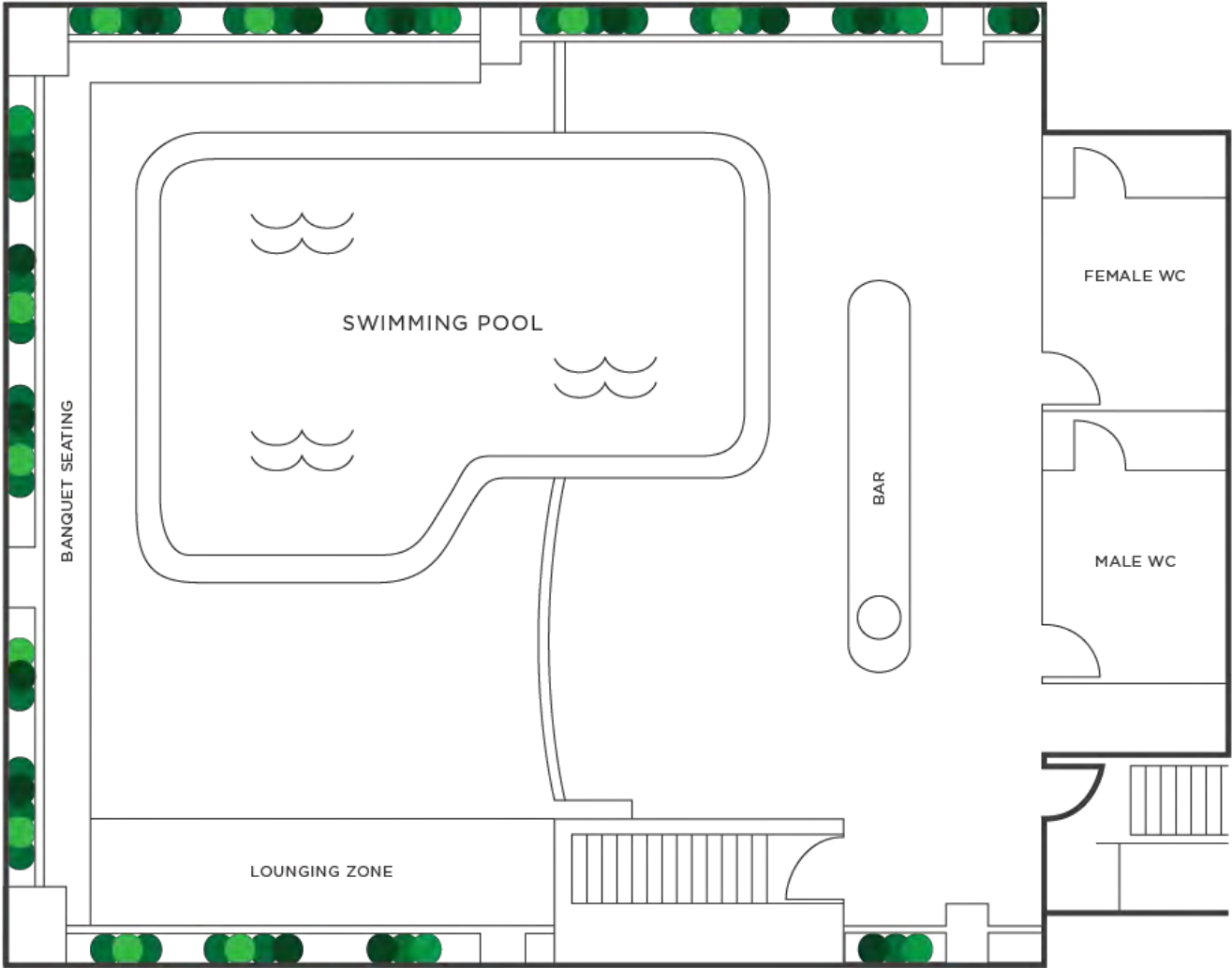
# FLOORPLAN

## Bossley Private Dining Room



# FLOORPLAN

## Rooftop Pool






# A NEW RYDGES HOTEL EXPERIENCE

## Hotel Features

Refreshingly local in design, the modern rooms create a welcoming and serene environment inspired by the Australian landscape, offering three different accommodation types including king rooms, suites and apartments. The new Rydges Melbourne features a streamlined check-in, in-room connectivity, interactive fitness studio, outdoor heated rooftop pool and Bossley Bar & Restaurant.

- Conveniently located in the heart of Melbourne CBD – theatre district, iconic dining, Chinatown, exclusive Collins St boutiques, major sporting precincts and entertainment at your doorstep
- 370 guest King Rooms, Suites & Apartments
- Seamless and connected check-in experience
- Heated outdoor pool on the rooftop
- Interactive fitness studio and outdoor terrace
- Bossley Bar & Restaurant
- 24 hour in-room dining
- Working spaces in the lobby
- Complimentary high-speed Wi-Fi





# RYDGES

HOTELS · RESORTS

RYDGES MELBOURNE

186 Exhibition Street,  
Melbourne, VIC 3000

ENQUIRIES

+61 3 9635 1286

[functions\\_rydgesmelbourne@evt.com](mailto:functions_rydgesmelbourne@evt.com)

REFRESHINGLY LOCAL

[RYDGES.COM](https://rydges.com)