

MEET





**MEET** at Sage Hotel Wollongong where we deliver spaces that help you connect, create and develop.



**EAT** from our fresh and seasonal menus featuring the best local produce the Illawarra has to offer.



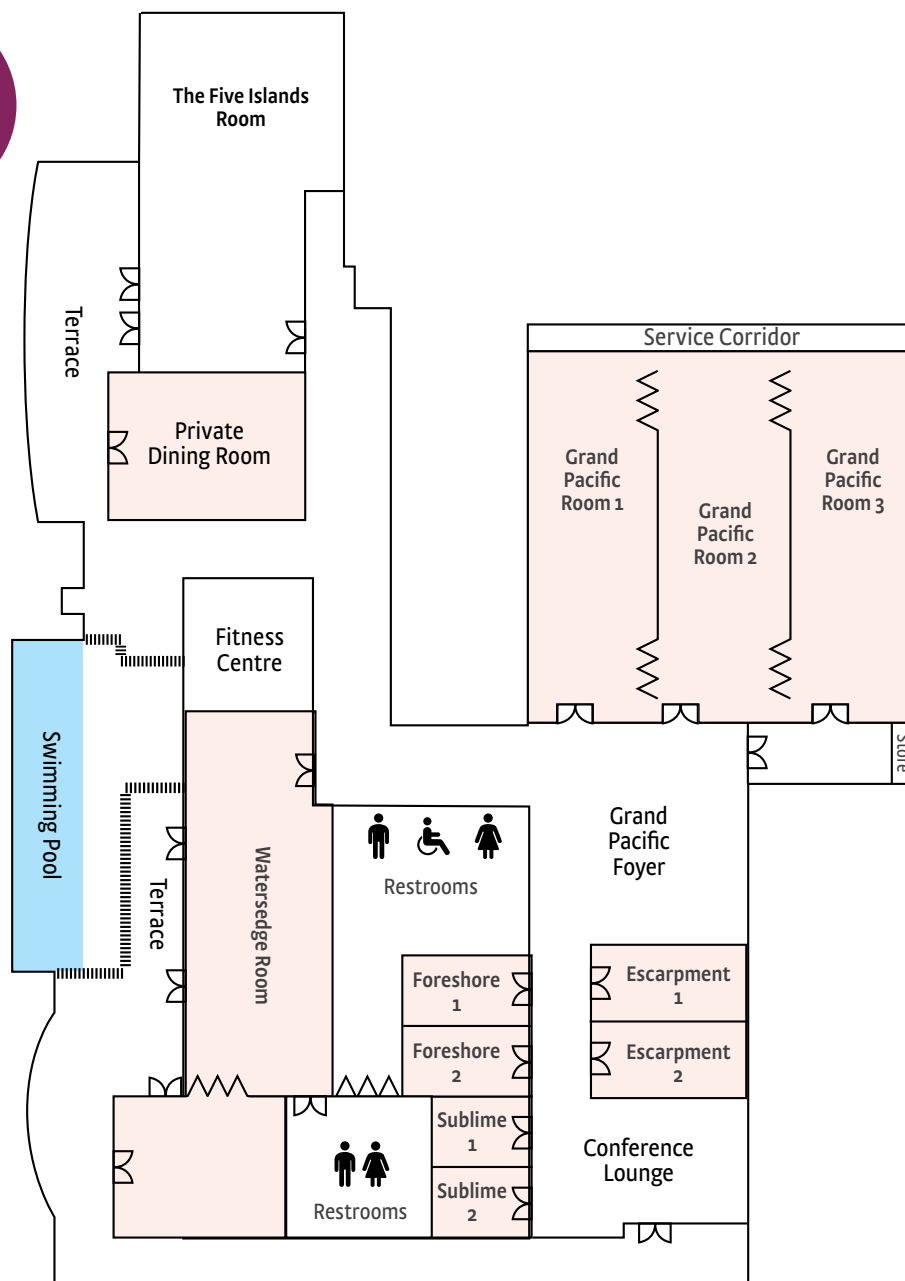
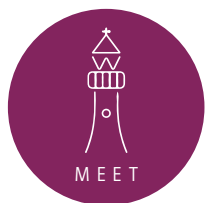
**EXPLORE** pristine beaches, skydiving, local entertainment or any one of our customized adventures.



## *Sage - a little bit of wisdom goes a long way*

At Sage you don't get just a room. We care about your guests from the moment they step into our modern facilities. We believe in value-adding by providing:

- Complimentary access to high speed Wi-Fi;
- A personalised onsite conference coordinator;
- Surprise and delight treat for you and your team;
- Complimentary access to our communal networking spaces;
- Complimentary access to our Gym and Pool
- Access to our great outdoor breakout space
- Complimentary access to our lead in AV package



Sage Hotel Wollongong offers 13 various sized function rooms and event spaces, all with retractable sound proof doors and two separate pre or post function areas.

No matter what type of event we have a space that fits:

- From 6 boardroom style rooms available for more intimate meetings or conferences and workshops that hold up to 40 delegates,
- To the elegant Watersedge Room flooded with natural light, which can host up to 150 people (cocktail style),
- To our Grand Pacific Ballroom ideal for celebrations, charity events, weddings or anniversaries hosting up to 400 people. This room has exceptional 4.5m ceilings creating an amazing impact on entry.





Venue	Room Size	Cabaret	Banquet	U-Shape	Theatre	Cocktail
Grand Pacific Ballroom	316.8m <sup>2</sup>	200	250	90	400	500
Grand Pacific Room 1	100.8m <sup>2</sup>	64	80	30	100	100
Grand Pacific Room 2	100.8m <sup>2</sup>	64	80	30	100	100
Grand Pacific Room 3	110.8m <sup>2</sup>	64	80	30	100	100
Grand Pacific Foyer	89.2m <sup>2</sup>	-	-	-	-	250
Escarpment	69.7m <sup>2</sup>	32	40	21	40	40
Escarpment 1	34.8m <sup>2</sup>	16	20	-	20	25
Escarpment 2	34.8m <sup>2</sup>	16	20	-	20	25
Foreshore	56.9m <sup>2</sup>	24	30	16	30	40
Foreshore 1	25.9m <sup>2</sup>	16	20	-	15	20
Foreshore 2	25.9m <sup>2</sup>	16	20	-	15	20
Sublime Point	42.4m <sup>2</sup>	24	20	10	20	20
Sublime Point 1	21.2m <sup>2</sup>	8	10	-	10	10
Sublime Point 2	21.2m <sup>2</sup>	8	10	-	10	10
Watersedge Room & Terrace	289.2m <sup>2</sup>	96	120	30	130	180
Private Dining Room	82.4m <sup>2</sup>	48	40	30	50	50
Five Islands Restaurant	144m <sup>2</sup>	-	70	-	-	300







## *Looking for inspiration...*

The use of our spaces are only limited by your imagination.

We can create any of the following and much more.

Here are some of the events we have created for our guests in the past.

Award Ceremonies

Birthday Parties

Board Meetings

Christenings

Gala Dinners

Formals

Graduations

Seminars

Trade Shows

Training

Weddings

For more information on these space transformations please contact our Events team.

We would love to work with you to create your unique experience.

P: +61 2 4201 2111

E: [functions.wollongong@sage-hotels.com](mailto:functions.wollongong@sage-hotels.com)





*Looking for a meeting room.  
We have a number of options  
to help you get the job done.*

#### Room Only Inclusions

- Stationery Pack
- Water
- Flip Chart
- White Board
- S&D
- Basic AV
- Room set of your choice

#### Half Day Delegate Package Inclusions

- 6pax minimum
- Stationery Pack
- Water
- Flip Charts
- Whiteboard
- S&D
- Basic AV
- Room set of your choice
- Choice Morning or Afternoon tea
- Working Lunch with Seasonal menu
- Unlimited Tea & Coffee

#### Full Day Delegate Package Inclusions

- 6pax minimum
- Stationery Pack
- Water
- Flip Charts
- Whiteboard
- S&D
- Basic AV
- Room set of your choice
- Morning Tea
- Working Lunch with Seasonal menu
- Afternoon Tea
- Unlimited Tea & Coffee

#### Eat, Meet, Sleep Inclusions

- 6pax minimum
- Stationery Pack
- Water
- Flip Charts
- Whiteboard
- S&D
- Basic AV
- Room set of your choice
- Buffet Breakfast
- Morning Tea
- Working Lunch with Seasonal menu
- Afternoon Tea
- Unlimited Tea & Coffee
- Accommodation in one of our Sage Rooms







## *Host an event with a casual modern feel....*

Give your guests a bite size taste of our Illawarra produce....

Encourage your guests to mingle and dine at the same time....

### Platters

The perfect option for your smaller intimate gatherings.

With a large variety of platter options, you can mix and match to meet your taste buds.

*Serves 6 guests*

### Grazing Stations

Create a visual statement with our enticing grazing stations.

Your guests will enjoy the never-ending array of food choices.

*Minimum 30 guests*

### Canape Packages

Catered and served – bring the wow factor with our sensational, handmade canapes showcasing local Illawarra's produce. Choose from a number of unique cocktail morsels your guests will savour and enjoy.

*Minimum 50 guests*





## *Food Glorious Food – deliciously customised menus served directly to your table.*

Take your guests on a culinary journey to meet all budgets and delight all taste buds.

### Breakfast

One should never skip the most important meal of the day. Have your guests start the day the right way with one of our breakfast offerings

Full Buffet Breakfast | Sage Plated Breakfast

*Minimum 20 guests*

### Plated Menus

Choose your set menu from a wide selection of seasonally inspired dishes

Use our existing restaurant menus and pre orders

*Minimum 30 guests*

You can choose how many courses

### Buffets

Keep your guests exceedingly happy and exceedingly full with our amazing Sage buffets.

Choose from a great selection of buffet favourites or try some of our chef's unique creations.

*Minimum 60 guests*

Choose from a selection of buffet favourites or try some of our chefs unique creations.







At Sage we are here to help you celebrate with a great selection of local beverages plus all your regular favourites.

## *Can't decide what to drink?*

Let us take away the confusion of choice by selecting one of our beverage packages. You can trust us we have personally tested this thoroughly.

### Sage Beverage Package

Light, mid and full strength beer  
House red, white and sparkling wine  
Soft drinks and juice

*Minimum 50 guests*

### Sage Spirit Package

Light and mid strength beer  
House red, white and sparkling wine  
House basic spirits  
Soft drinks and juice

*Minimum 50 guests*

### Sage Class Package

Craft light and mid strength beer  
Selection of red, white and sparkling wine  
Premium spirits  
Soft drinks and juice

*Minimum 50 guests*

### Mobile Bars

No matter where you choose to host your event we can bring a bar to you.  
With flexible payment options you and your guest will never be parched.  
Cash bars or set up a tab  
Mocktails and cocktails  
Draught and bottle beers





## *Many activities...*

Be it a leisurely stroll along our pristine beaches or an adrenaline filled sky dive, there is so many activities we can help you coordinate to keep your guests engaged.

Beach Walks

Bicycle Rides

Surf Lessons

Sky Diving

Hang Gliding

Nature Reserves

Grand Pacific Drive

Beach Yoga

Golf

Kayaking

Fishing

Stand Up Paddle Boarding

A wide range of activities will keep your guests excited and involved.  
Create an event that they'll never forget





## Sweet Dreams...

after a hard days work meeting, eating and exploring? Sage Hotel Wollongong offers you 168 comfortable rooms for you and your guests to relax in before, during or after your event..



Deluxe Queen Room

- Room count: 48
- Bedding: Queen bed
- Size: 31sqm
- Level: 4 – 11

Features: 40" flat screen TV, espresso coffee pod machine and views overlooking the Wollongong golf course



Deluxe Twin Room

- Room count: 14
- Bedding: 2 X Single bed
- Size: 31sqm
- Level: 4 – 11

Features: 40" flat screen TV, espresso coffee pod machine and views overlooking the Wollongong golf course



Executive Balcony Room

- Room count: 74
- Bedding: King bed or 2 X Single bed
- Size: 31sqm
- Level: 4 – 11

Features: 40" flat screen TV, espresso coffee pod machine together with your private balcony overlooking the city or the golf course



Executive Suite

- Room count: 14
- Bedding: King bed or 2 X Single bed
- Size: 48sqm
- Level: 4 – 11

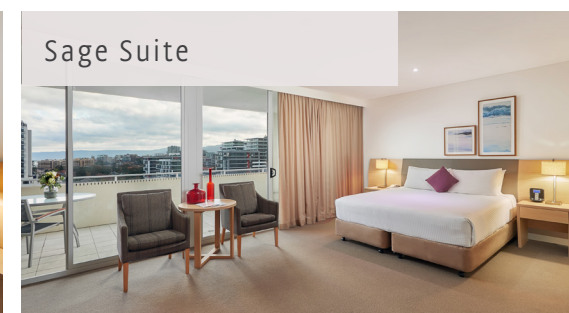
Features: 40" flat screen TV, espresso coffee pod machine, iPod docking station together with your private balcony overlooking the city



Junior Suite

- Room count: 14
- Bedding: King bed or 2 X Single bed
- Size: 58sqm
- Level: 4 – 10

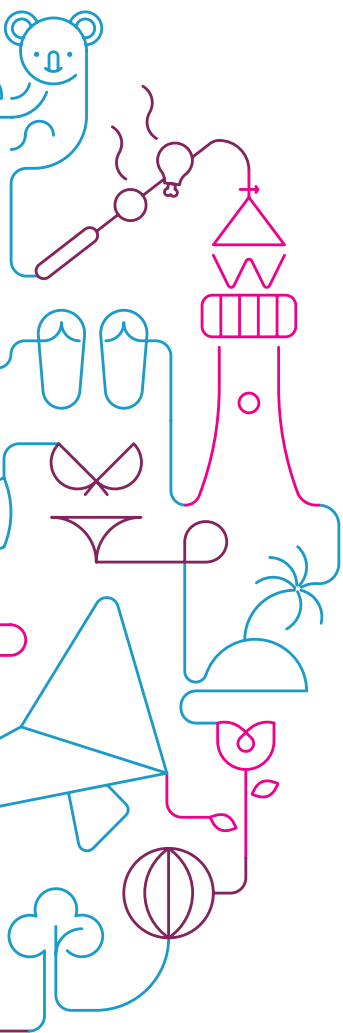
Features: 40" flat screen TV, espresso coffee pod machine, iPod docking station, kitchenette together with your private balcony overlooking the city



Sage Suite

- Room count: 4
- Bedding: King bed
- Size: 71sqm
- Level: 11

Features: 40" TV, espresso coffee pod machine, iPod docking station, stunning views from your private balcony overlooking the city or golf course





*So we have got your  
attention and you're  
ready to book?*

Contact us today to have your event  
reimagined or interrogate one of  
our function coordinators.

w. [www.sagewollongong.com](http://www.sagewollongong.com)

e. [functions.wollongong@sage-hotels.com](mailto:functions.wollongong@sage-hotels.com)

t. +61 2 4201 2111

