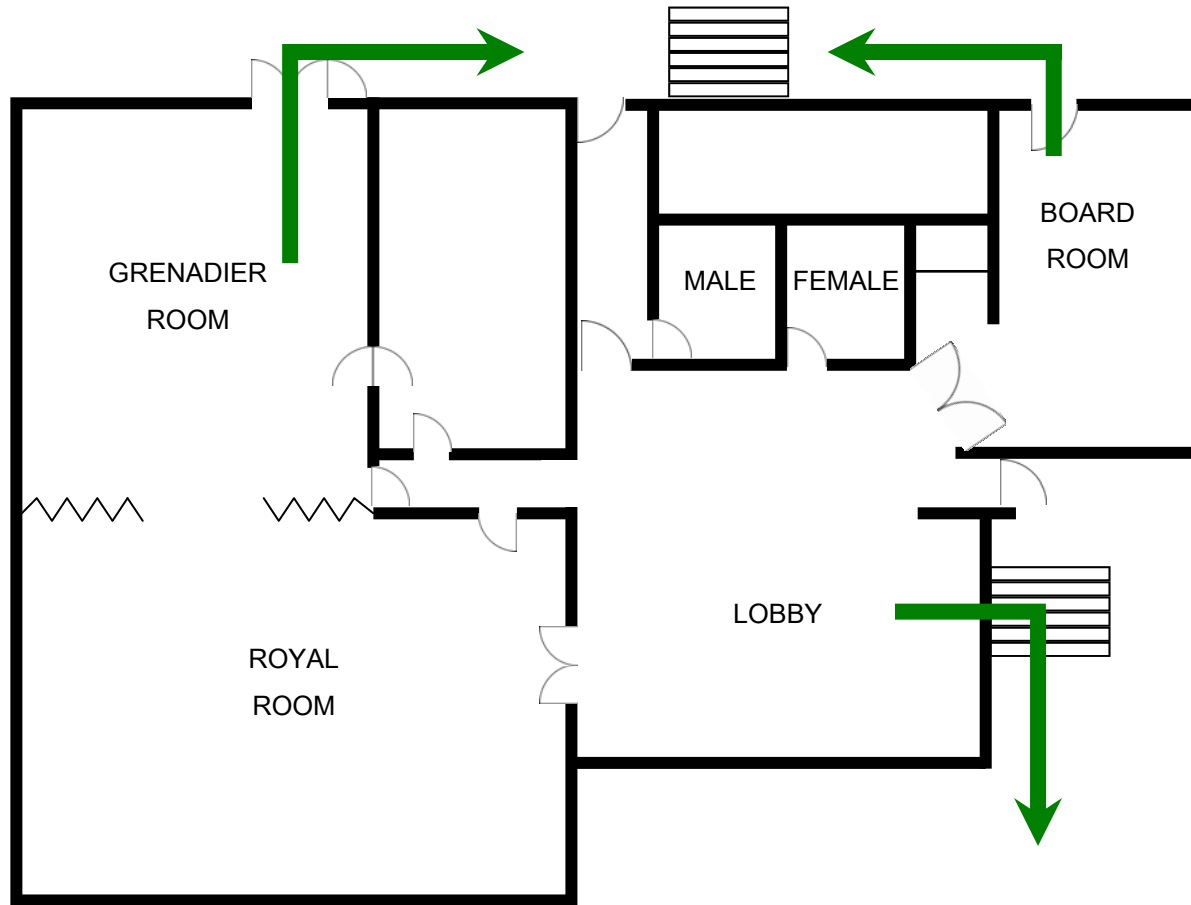
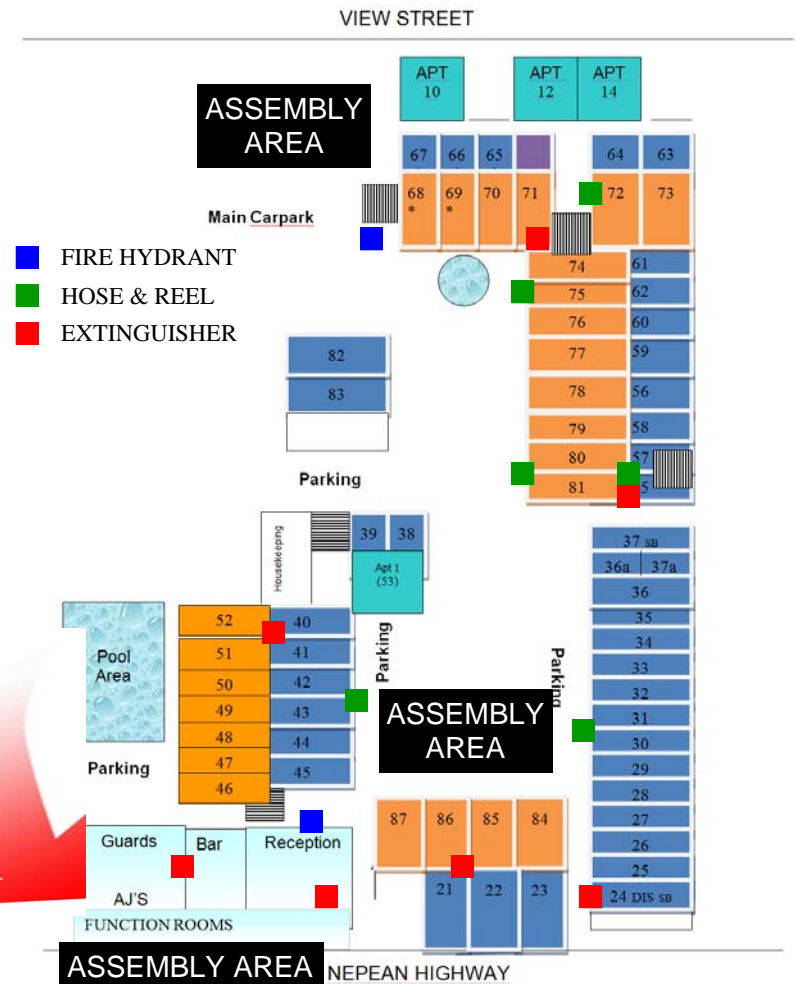


# FUNCTION ROOM EMERGENCY EVACUATION PROCEDURES



← FIRST FLOOR FUNCTION ROOMS



On hearing the Evacuation Siren or being verbally directed to evacuate, you are to:

1. Switch off any appliances you have been using.
2. Evacuate to an Emergency Assembly Area located on the map.
3. Report to the Fire Warden at the Assembly Area.
4. Remain at the Assembly Area until released by the Fire Warden.